



JSW THE JAPAN STEEL WORKS, LTD.

URL <http://www.jsw.co.jp/>

Division Gate City Ohsaki-West Tower, 11-1, Osaki 1-chome, Shinagawa-ku,
 Head Quarter: Tokyo 141-0032, Japan
 Phone: +81-3-5745-2081 Fax: +81-3-5745-2083~84
 URL http://www.jsw.co.jp/inj_f/inj_index.htm

JSW Plastics Machinery Inc.

Head Office: 555 South Promenade Ave., Unit 104, Corona, California 92879, U.S.A.
 Phone: +1-951-898-0934 Fax: +1-951-898-0944
 Chicago Office: 540 Capital Drive, Suite 130, Lake Zurich, Illinois 60047, U.S.A.
 Phone: +1-847-550-0704 Fax: +1-847-550-0725
 Detroit Office: 24300 Catherine Industrial Drive, Suite 403, Novi, Michigan 48375, U.S.A.
 Phone: +1-248-308-2822

The Japan Steel Works (Singapore) Pte. Ltd.

17 Gul Lane 629413 Singapore
 Phone: +65-68614511 Fax: +65-68623166

PT. JSW Plastics Machinery Indonesia

Gajah Building Unit K, Jl.Dr.Saharjo No.111 Tebet, Jakarta Selatan 12810, Indonesia
 Phone: +62-21-8370-2536 Fax: +62-21-829-8264

JSW Plastics Machinery (Philippines) Inc.

Unit 802 Alabang Business Tower, 1216 Acacia Avenue, Madrigal Business Park Alabang Muntinlupa City Metro Manila 1771, Philippines
 Phone: +63-2-478-2533 Fax: +63-2-809-6221

JSW Plastics Machinery (M) SDN. BHD.

D6-5-G,(Ground Floor), Block D6, Pusat Perdagangan Dana 1, Jalan Pju 1A/46, 47301, Petaling Jaya, Selangor Darul Ehsan, Malaysia
 Phone: +60-3-78426076 Fax: +60-3-78426078

The Japan Steel Works (Thailand) Co., Ltd.

78/6 JST Building 4th Fl., Moo 7 King Kaew Road, Rachatewa, Bangplee, Samutprakarn 10540 Thailand
 Phone: +66-2-738-5272 Fax: +66-2-738-5277

JSW Plastics Machinery Vietnam Ltd.

Room103, Techno-Center Thang Long Industrial Park Dong Anh District, Hanoi, Viet Nam
 Phone: +84-4-3951-6383 Fax: +84-4-3951-6384

JSW Plastics Machinery (H.K.) Co., Ltd.

Room 907, Corporation Park, 11 On Lai Street, Shatin N.T., Hong Kong
 Phone: +852-2648-0720 Fax: +852-2686-8204

JSW Injection Machine Maintenance (Shenzhen) Co., Ltd.

1F, YiBen Electronic & Business Industrial Park, No.1063 Chaguang Road, Xili Town, Nanshan District, Shenzhen City, Guangdong Province, 518055, People's Republic of China
 Phone: +86-755-8602-0930 Fax: +86-755-8602-0934

JSW Machinery Trading (Shanghai) Co., Ltd.

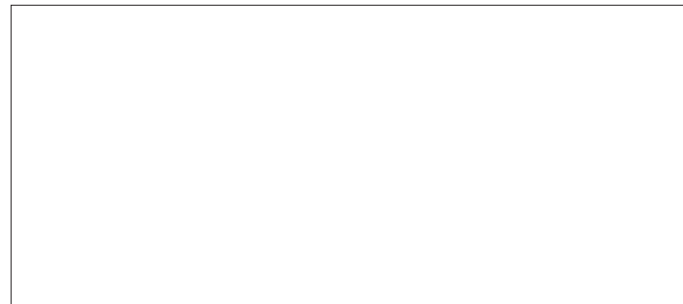
28A, Strength Plaza, No.600-4, Tianshan Road, Shanghai, 200051, People's Republic of China
 Phone: +86-21-5206-7031 Fax: +86-21-5206-7033

JSW Plastics Machinery (TAIWAN) Corp.

Head Office: 1F., No.21, Da Hu 1st Road, Guieshan Shiang Taoyuan Country 33373 Taiwan, R.O.C.
 Phone: +886-3-396-2102 Fax: +886-3-396-2104
 Tainan Office: 15F.,-7, No.689-78, Xiaodong Road, Yongkang City, Tainan Country 71052 Taiwan, R.O.C.
 Phone: +886-6-311-4192 Fax: +886-6-311-4193

Japan Steel Works India Private Limited

611, Time Tower, MG Road, Sector 28, Gurgaon, haryana, 122001, India
 Phone: +91-124-469-4444, Fax: +91-124-469-4433



Printed in Japan HO,AE,JD,BJ,C

JADS SERIES
 All Electric Servo Drive Injection Molding Machine



Model
J220ADS | J280ADS | J350ADS | J450ADS



ISO 9001
 ISO 14001
 JQA-QMA13993
 JQA-EM6416

The results of four generations of accomplishments and new technologies - J-ADS

Providing the maximum safety to all of our customers

AD Strong

Clamping Unit Lightweight high rigidity, low vibrations
Longer mold life
Reduced grease use for cleaner machine
Clamping force feedback
Reduction in mold maintenance costs

AD Stable

Injection Unit New designed energy saving barrel
New proposals for screw technologies
Stabilization of molded parts
JSW original recovery functions
Wide selection of injection unit to customer needs

AD Smart

Controller Function enrichment with simple operation
Simple display of process parameters
Molding condition memo
I/O customized function

AD Support

Energy-saving/maintenance Energy-saving function
Power consumption monitor
Supporting reduction in power consumption
Both predictive and preventive maintenance



* Hydraulic unit is optional



Complying with safety regulations Industrial machinery
Industry safety rules (JIMS K1001)

–Premier quality in the industry

ADStrong

Clamping Device

Rigid clamping device manufactured utilizing JSW's expertise in materials technologies. Produced from raw materials, is effective in assuring stable production.

Clamping Device

- Lightweight high rigidity, low vibrations
- Longer mold life
- Reduced grease usage for cleaner operation
- Promoting proprietary manufacturing
- Flat press platen Chapter 2

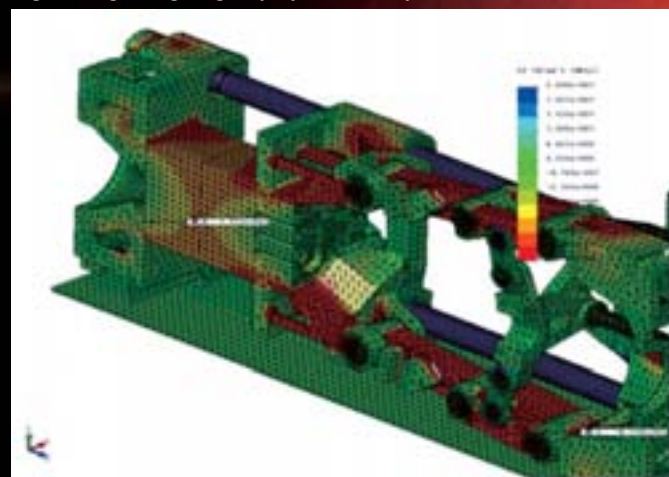
Bushingless movable platen by adoption of linear guides



Friendly to Molds

- Clamping force monitoring
- Clamping force feedback
- Reduction of mold maintenance costs
- Monitoring both mold open and close, and ejection process

Light-weight/high rigidity by FEM analysis



Mold Protection

- Simple auto setting
- Adjusts with mold temperature variations
- Molding-open monitoring, ejector monitoring

Mountable for Large-sized Mold

	J220ADS	J280ADS	J350ADS	J450ADS
Mold Height Min. – Max.	230~680	250~720	300~770	350~900
Tie Bar Distance (H x V)	650×590	730×630	810×730	900×810

(Unit: mm)

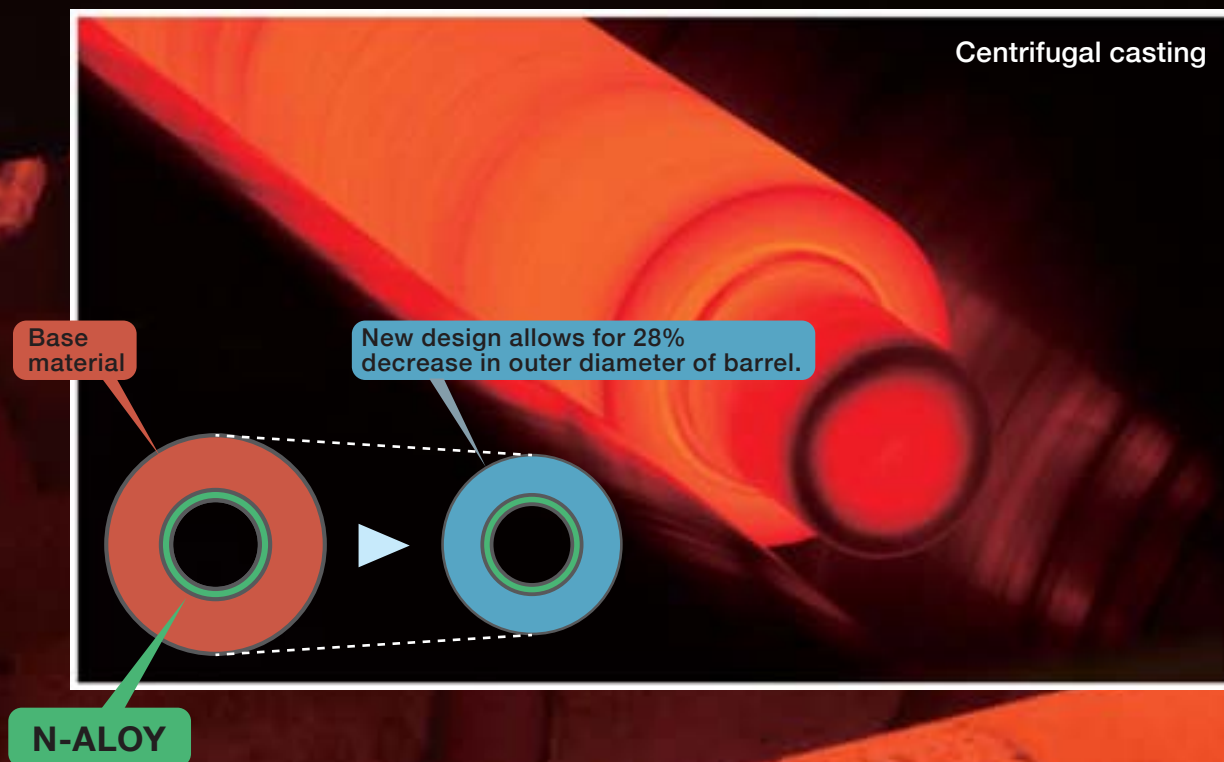
—JSW proprietary development

ADStable Injection Unit

The high precision measuring control and the screw variation response to every molding

New designed energy saving barrel

Reduced running cost, Shorter heat-up time



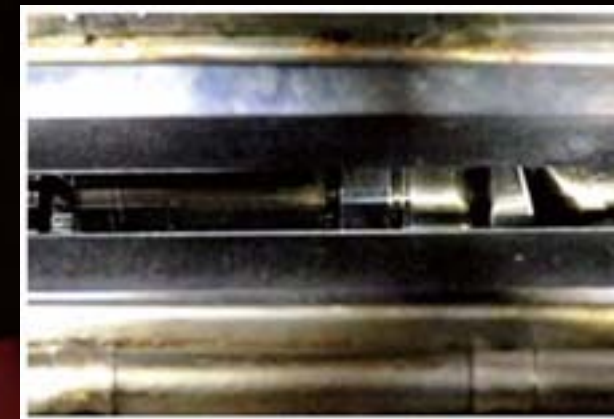
New proposal for the screw technologies

- Design • Manufacturing
- Materials • Research and development (R&D)

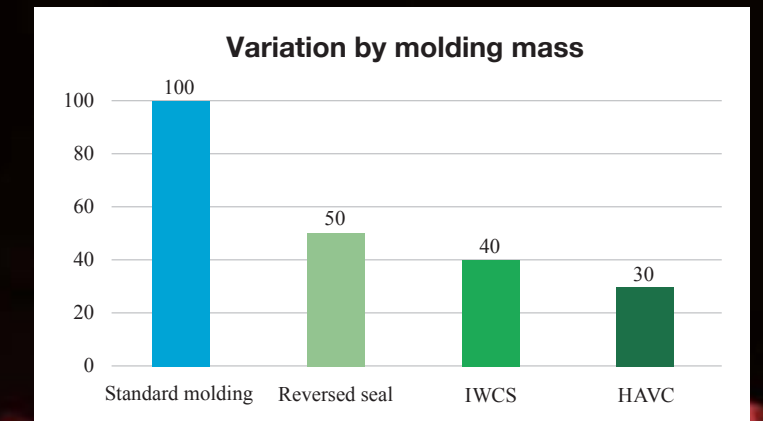


Stabilization of molding component Original measuring technology

Actual cut away view of barrel



Recovery stabilization control
(HAVC > IWCS > Reverse seal)



Wide module selection in response to the needs

	Injection unit	Screw diameter (mm)	Injection pressure (MPa)	Standard unit Max. injection speed (mm/s)	High speed unit Max. injection speed (mm/s)	Extended hold time Max. injection speed (mm/s)
J220ADS	300H	40	250	240	330	160
		46	189			
		51	154			
J280ADS	460H	46	234	160	300	160
		53	177			
		58	147			
J350ADS	890H	58	229	160	270	120
		66	177			
		72	149			
J450ADS	1400H	66	241	160	300	160
		76	182			
		84	149			
	2300H	84	190	160		160
		92	158			

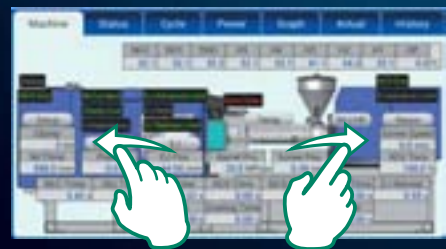
– Improvement for operability/ visibility

ADSmart Controller

Function enrichment by a simple operation

Main characteristics of SYSCOM5000i

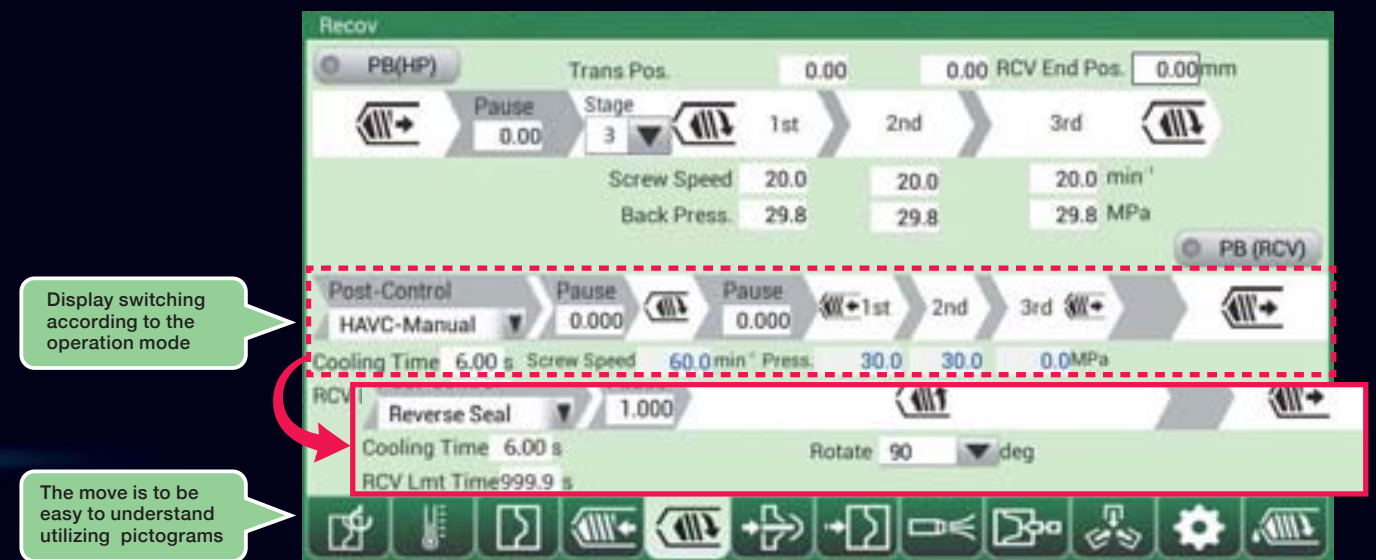
- Large 15" display utilizing energy savings LED technology
- Improvement for visibility by expanding the setting screen
- Agile multi-touch operation
- Simple operation lever switch
- On screen instruction manual



Enriched advanced function-mounted new controller SYSCOM 5000i

Easy to understand operation process display

Screen layout shows process sequence in each operation on mode.



With further convenient functions



Molding condition memo

Together with the molding conditions, the caution memo in molding and setting of the peripheral systems, and the image of molding components are able to be saved.

Maintenance memo

The history of the molding machine maintenance is able to record on the controller. The periodical inspection items and the execution history can be checked on the controller.



I/O customized function

I/O signals can be designed on screen.

- (1) Mold opening completed
- (2) Take-out instruction to the ejector
- (3) Take-out from the ejector, and receives the completed pulse signal
- (4) Clamping start
3-sec. operation of the belt conveyor

Enriched support

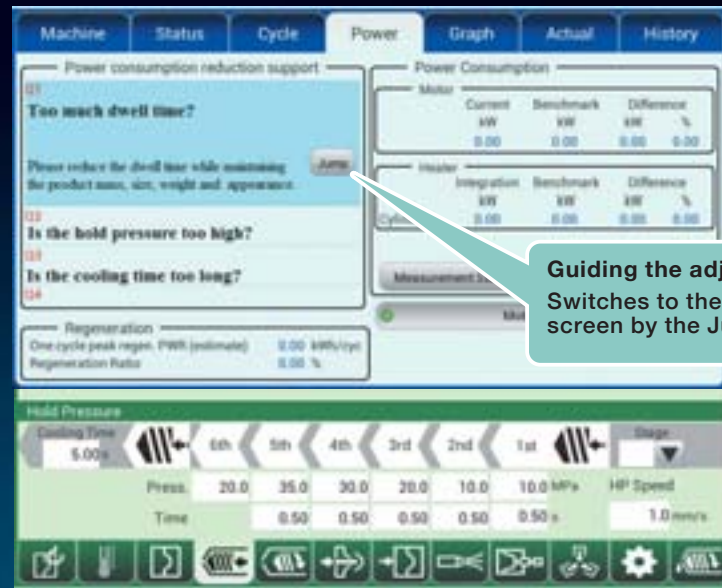
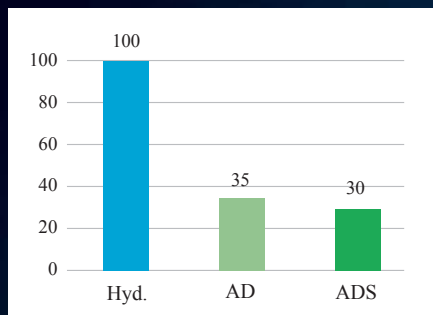
ADSupport

Energy-saving/maintenance

Energy-saving performance

Reduction support for power consumption
Assistance for molding condition change to reduce power consumption

Comparison of the power consumption amount
※Hydraulic machine: 100 standards



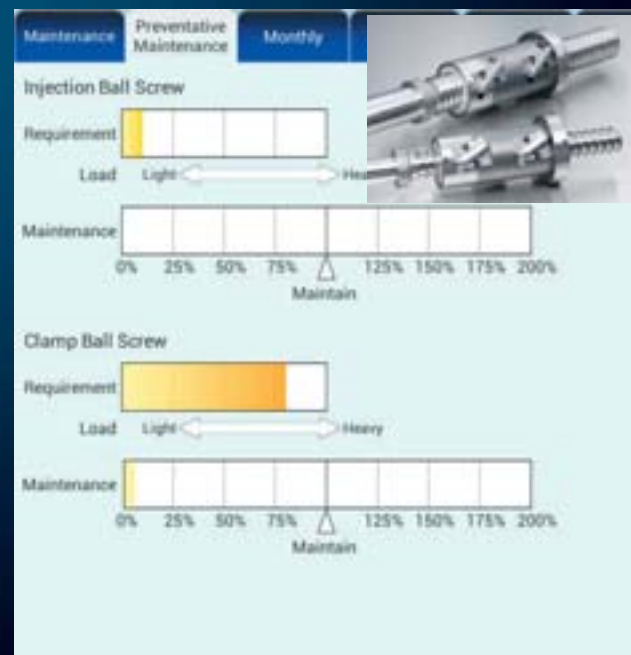
Guiding the adjustment points
Switches to the relevant setting screen by the Jump button

Support for maintenance

Periodical inspection
The periodical inspection items and the execution history can be checked on the controller.

Item No.	Item	Period	Status
Q-1	Ball screws	2014/12/15	Completed
Q-2	Automatic grease lubrication apparatus	2014/12/15	Completed
Q-3	Motor cooling fan	2014/12/15	Completed
Q-4	Control panel cooling fan	2014/12/15	Completed
Q-5	Mold thickness adjusting device		
Q-6	Water based mounting balls		
Q-7	Thermocouples		
Q-8	Grease hoses, lines		
Q-9	Linear guides		
Q-10	Hydraulic pressure hoses		
Q-11	Hydraulic cylinder		

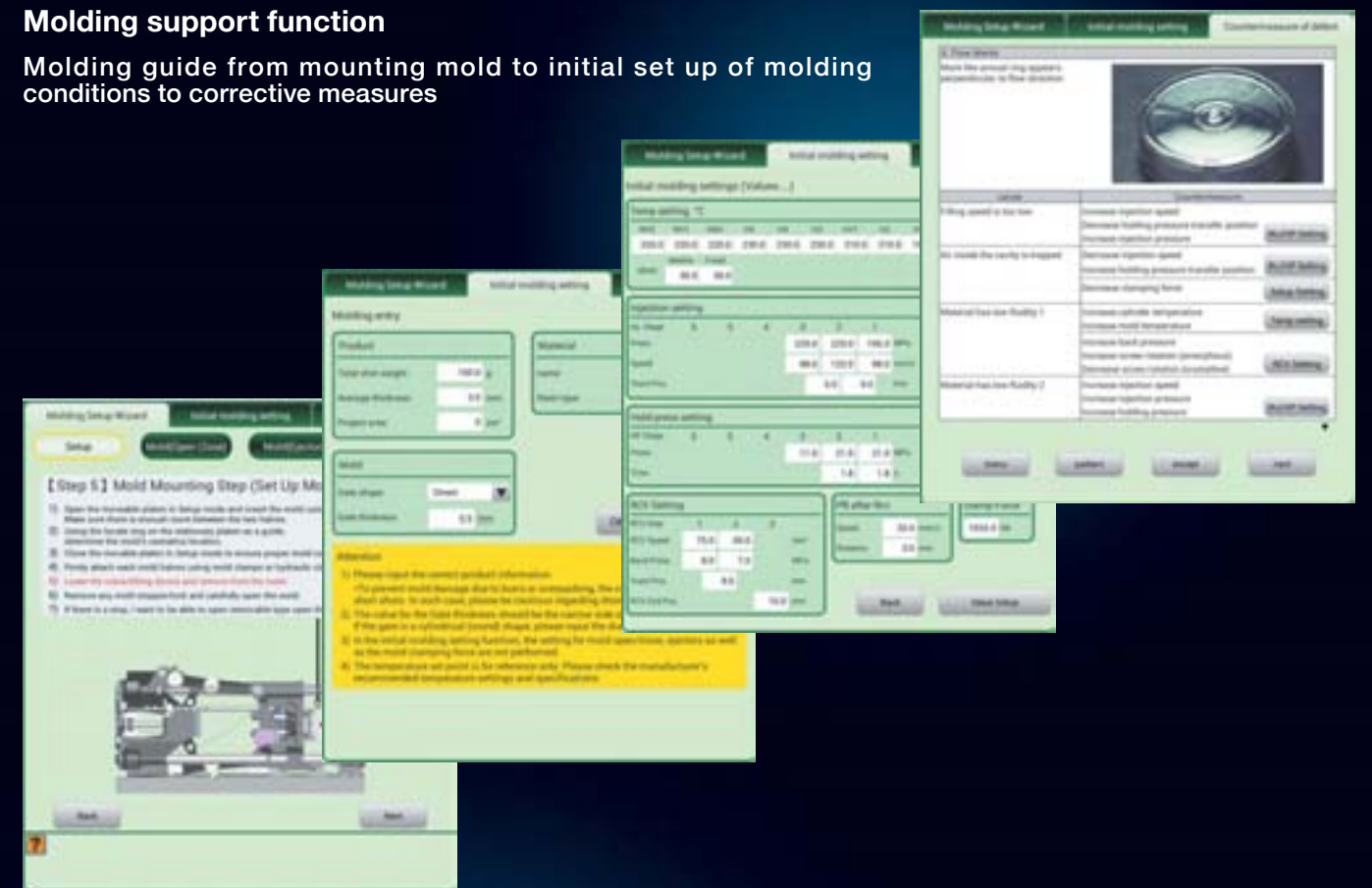
Prediction maintenance
Condition monitor of ball screws based on the operating load.



Energy-saving performance and enriched JSW's support system

Molding support

Molding support function
Molding guide from mounting mold to initial set up of molding conditions to corrective measures



Enriched Hiroshima injection R&D center

Injection school

In preparation for a training lecture by JSW experienced staff. Multiple levels of training are available.

Hiroshima injection R&D center

Injection R&D center has newest machines to support customer's trial test of molds, material, molding process and etc.

